

# Best of Both

Style & Tradition



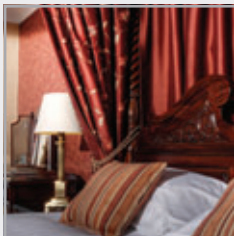
the Coppid Beech



the Swan



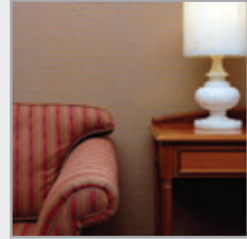
The Swan at Streatley is an intimate four-star property located on the banks of the river Thames in the picturesque village of Streatley. The hotel offers its guests 45 individually styled bedrooms and suites, an award winning restaurant, a relaxed riverside bar and terrace and a luxurious Spa with mineral pool.



"We will never forget our perfect and wonderful weekend at the Swan at Streatley, the whole experience was totally 'out of this world'"

# the Coppid Beech

The Coppid Beech Hotel is one of Berkshire's finest four-star properties, providing guests with well-presented, comfortable and spacious bedrooms; excellent food and a fully equipped health club.



It also has dedicated and purpose built meeting and conference facilities; a live music venue and three distinctive bars.

"Modern and fully equipped. Everything anyone could possibly need for both a long or short stay"



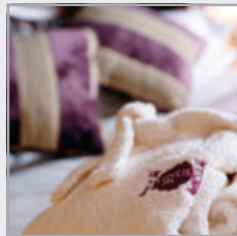
The property boasts 45 individually styled bedrooms including four-posters rooms and suites.



All guest rooms offer:

- En-suite facilities
- Luxury feather duvets and fine linens
- Satellite television
- Hospitality tray
- Telephone
- Hair dryers
- High speed wireless broadband Internet access (charges apply)
- All of our rates include a full English breakfast and complimentary Spa membership for the duration of your stay. \*

\* subject to availability



"None of us could think of a better place to spend a nice relaxing weekend than down by the river."

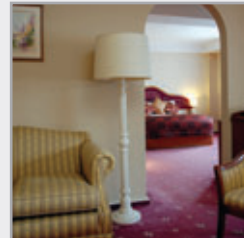
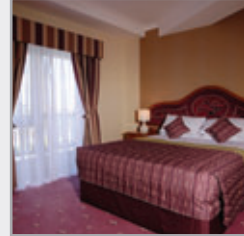
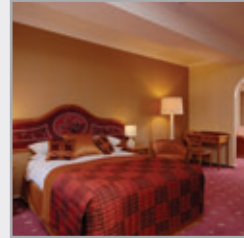


The hotel has 205 en-suite bedrooms, including 19 suites, several family rooms and a selection of superior rooms.



All the guest bedrooms offer the following:

- En-suite bathrooms
- Mini bar including a selection of complimentary soft drinks
- Complimentary wireless broadband
- Hair dryers
- Telephone
- Hospitality tray
- Satellite television
- Iron
- Soft fluffy robes
- Check in from 2pm
- Late check out available upon request
- All of our rates are inclusive of full English breakfast and complimentary Waves Health & Fitness club membership for the duration of stay.



"A very comfortable, well presented hotel. We couldn't believe our spacious our room was!"



## Cygnatures & the Terrace

Exquisite food served in beautiful surroundings. Food is a key ingredient in The Swan at Streatley experience. Whether you are sitting down to a romantic dinner for two, a light lunch or tea and scones by the fire, you can be sure of outstanding quality and service.



We pride ourselves on using the best quality seasonal ingredients available locally to create classical dishes with a modern approach.

Lunch and dinner are served in Cygnatures restaurant. Light meals and bar snacks are served in our Cygnet bar or, in warmer weather, on our Riverside Terrace.

Traditional afternoon tea can be taken on the Riverside Terrace or in our drawing room.

Every Sunday, Cygnatures Restaurant serves a full Sunday lunch. This is extremely popular so booking is recommended.

[www.swanatstreatley.co.uk](http://www.swanatstreatley.co.uk)



Cygnatures



"Idyllic setting, fine food, great wine – what more could you want from a restaurant? We will almost certainly be back."



## Rowans & Brassiere at the Keller

Rowans offers a distinctive dining experience: enjoy relaxed surroundings; be waited on by enthusiastic and knowledgeable people; taste simply stunning food prepared using the very best locally sourced ingredients. Whether dining with friends or enjoying a romantic dinner for two, Rowans is a perfect choice.



Rowans



The Brassiere at the Keller is an informal bar and restaurant, serving a variety of delicious international and 'pub' style dishes. The bar menu also has a selection of exciting premium beers and lagers from around the world.

"I would certainly return and would strongly recommend the hotel for a delicious, relaxing and good value Sunday lunch."



## Venus Spa

The Venus Spa at the Swan at Streatley is one of Berkshire's premier spas. Affiliated with Elemis, Venus Spa is located in one of the most beautiful locations in the southeast of England. The Spa boasts an extensive pampering menu. Take your pick from the selection of massages, body wraps and facials offered or enjoy some of the holistic therapies available.



Offering both day spa and residential spa packages, Venus Spa provides guests the perfect location to relax, unwind and rediscover the real you.

"I spoil myself with a body wrap – it was fantastic, the best spa treatment I have ever had!"



## The Keller

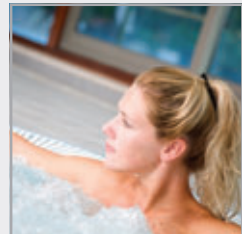
The Keller hosts live music acts from a wide variety of cover bands and tribute acts. The Keller also screens most major midweek sporting events including Premiership and European football, Six Nations and International Rugby tournaments, Grand Slam tennis including Wimbledon and PGA Golf.

## Après Nightclub

Après Nightclub and cocktail bar is one of the southeast's most fashionable nightspots with the over 25's. A stylish meeting place, the club provides a sophisticated social backdrop on Friday and Saturday night, from 9:30pm to the early hours of the morning.

## Waves Health and Fitness Club

Waves Health and Fitness Club is the perfect urban retreat. Designed and equipped to the highest standard, Waves Health and Fitness Club creates an atmosphere in which you are free to enjoy at your own pace, from a strenuous workout, a scheduled class, a leisurely swim or just take time out to relax. A full range of Decleor beauty therapy treatments are also available.



## The John Nike Leisuresport Complex

The John Nike Leisuresport Complex is adjacent to the Coppid Beech Hotel and has three ski slopes (novice, intermediate and main) all using our revolutionary new Perma-snow surface technology that is quicker than bristle-type matting. It provides skiers and boarders alike with the quality and feel of powder snow.



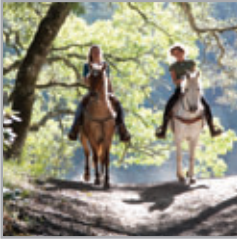
The centre also boasts an Olympic size ice rink and snow tubes / tobogganing. For guests wanting to learn the basics of skiing or those wishing to refresh their skills ahead of a trip to the Alps; the skiing, snowboarding and winter sports at John Nike Leisuresport Complex are some of the best facilities in the UK.

"I can't get over how helpful and friendly the staff are – nothing is too much trouble."



### To Do:

Golf, fishing, shooting and riding.



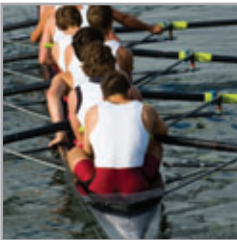
### To See:

Henley and Basildon House.



### To Be Seen:

Regatta

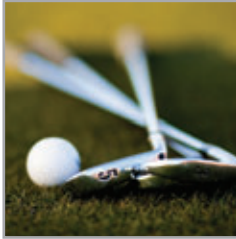


[www.swanatstreatley.co.uk](http://www.swanatstreatley.co.uk)



### To Do:

Horse racing and golf.



### To See:

Windsor, Eton and LEGOLAND®.

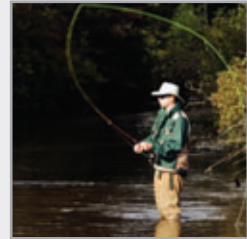


### To Be Seen:

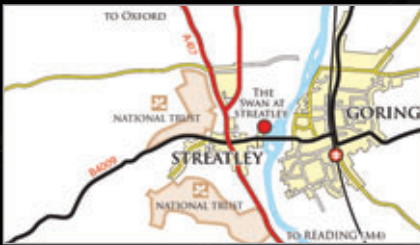
Ascot



[www.coppidbeech.com](http://www.coppidbeech.com)



"The Coppid Beech Hotel is great for families – especially those with young children – the facilities are exceptional."



The Swan At Streatley  
Streatley on Thames, Berkshire, RG8 9HR  
Tel: +44 (0) 1491 878800  
Fax: +44 (0) 1491 872554  
Email: [sales@swan-at-streatley.co.uk](mailto:sales@swan-at-streatley.co.uk)  
[www.swanatstreatley.co.uk](http://www.swanatstreatley.co.uk)



The Coppid Beech Hotel  
John Nike Way, Bracknell, Berkshire, RG12 8TF  
Tel: +44 (0) 1344 303 333  
Fax: +44 (0) 1344 301 200  
Email: [sales@coppidbeech.com](mailto:sales@coppidbeech.com)  
[www.coppidbeech.com](http://www.coppidbeech.com)

The Swan At Streatley and The Coppid Beech are owned by the Nike Group of Companies  
and are operated by Nike Group Hotels Ltd.